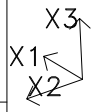
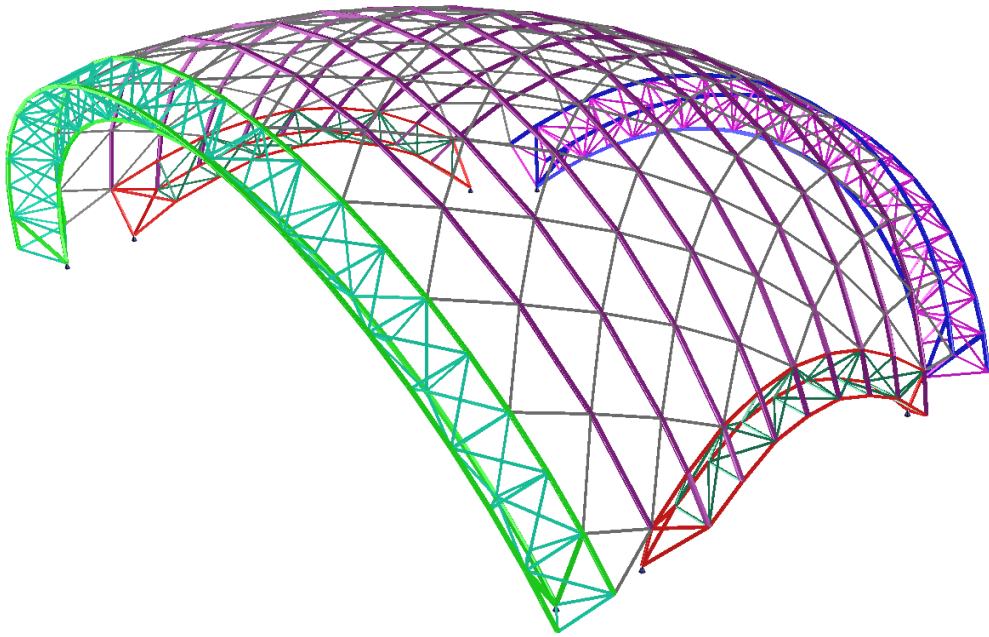


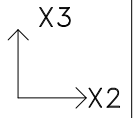
kupol V1 2024 04 21



DATE:28/04/24

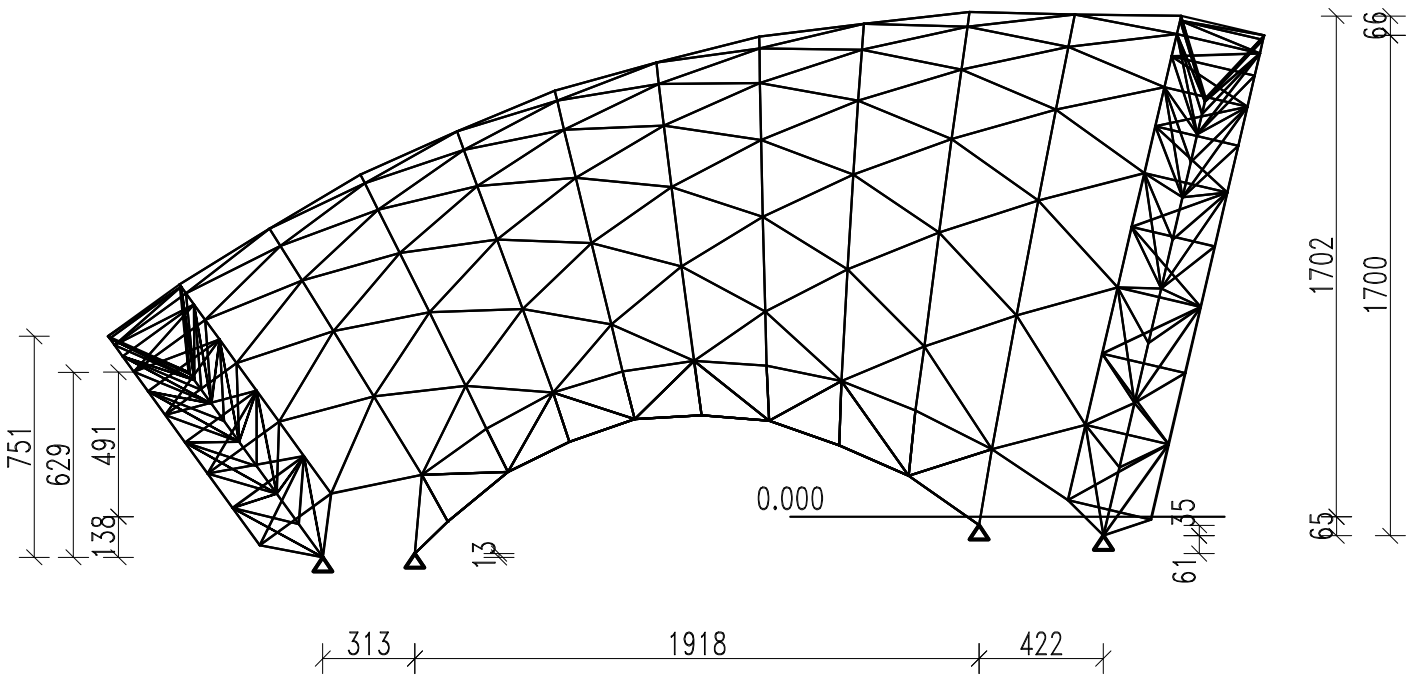


kupol V1 2024 04 21

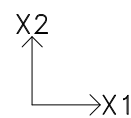


SCALE = 1:257

DATE:28/04/24

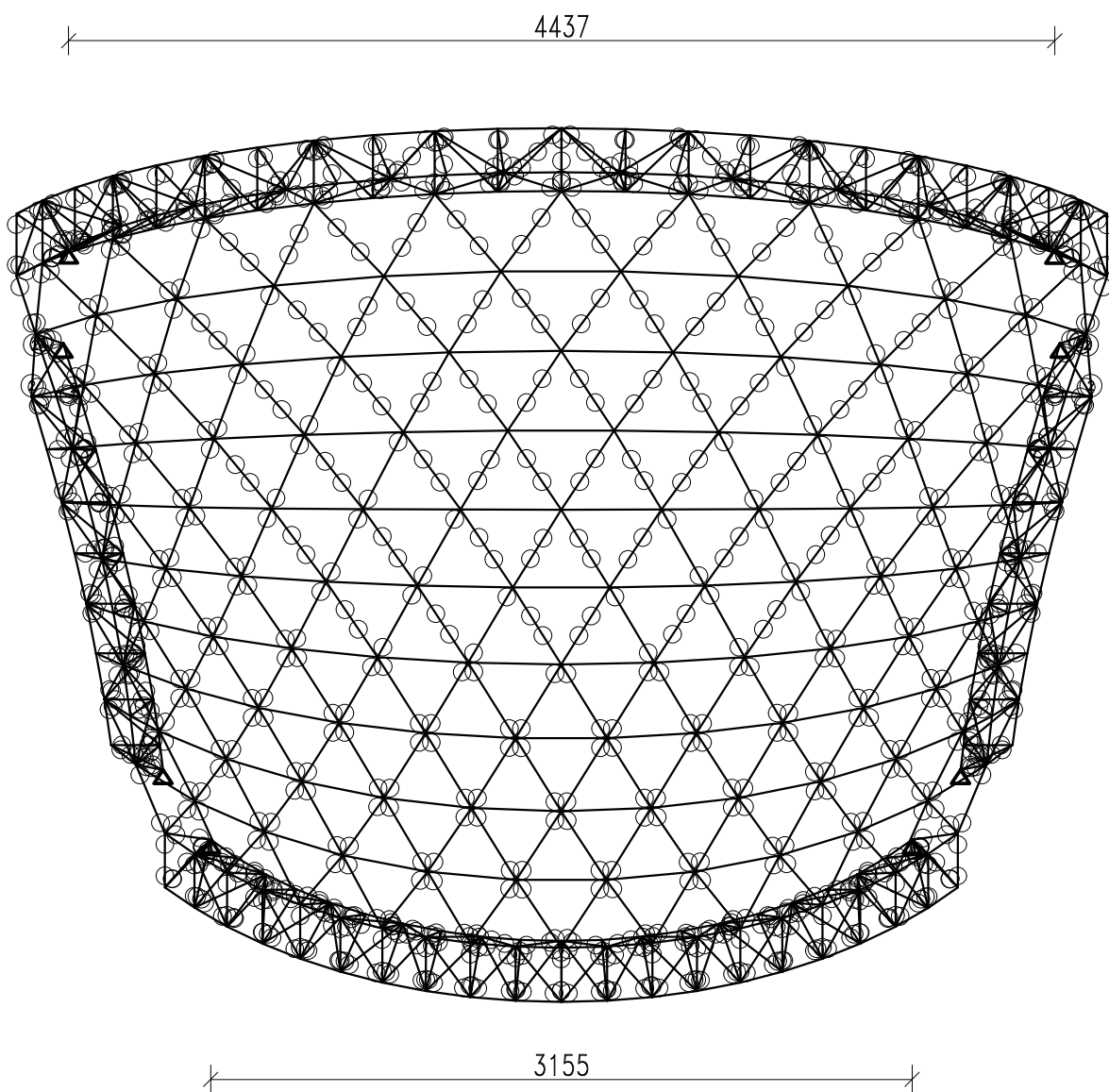


kupol V1 2024 04 21

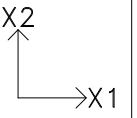


SCALE = 1:321

DATE:28/04/24

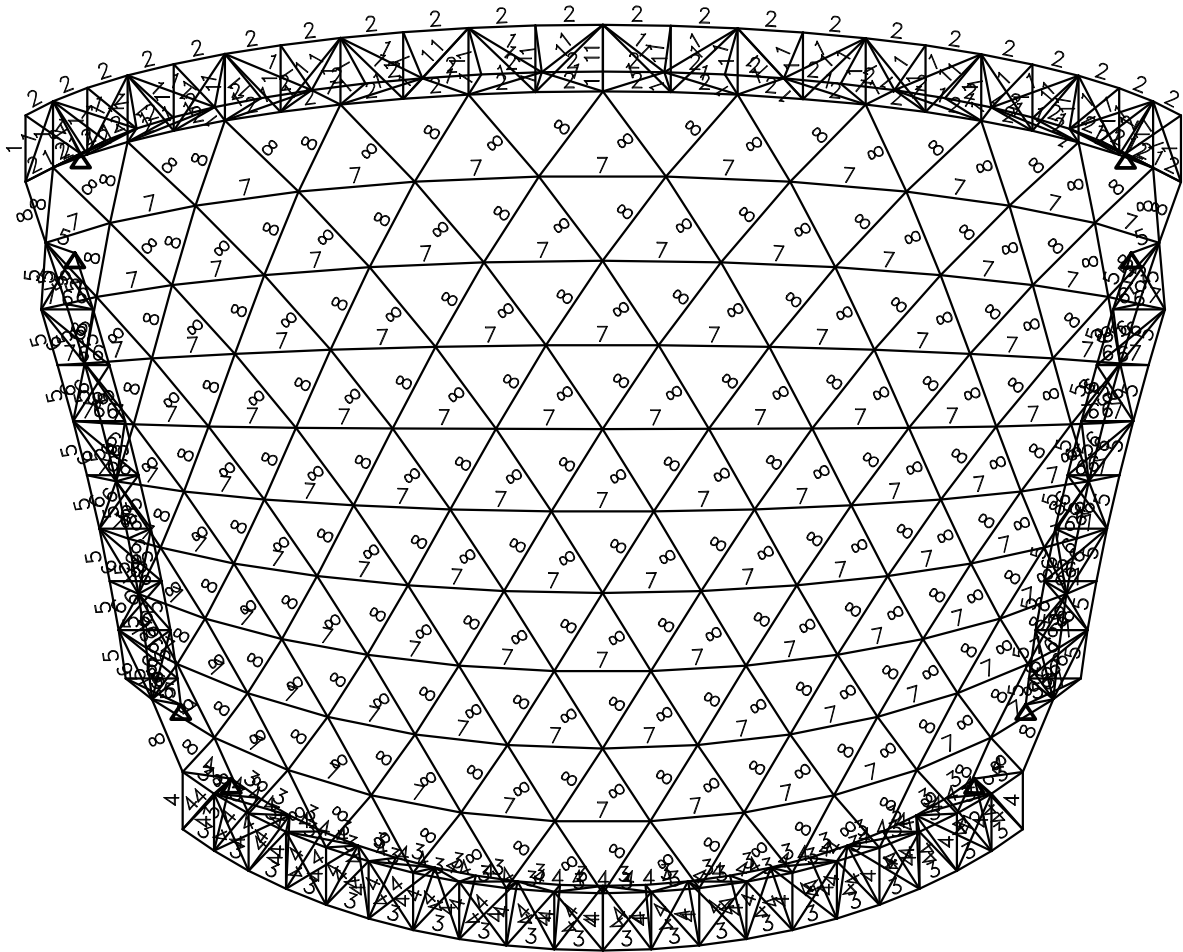


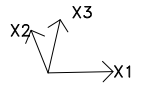
kupol V1 2024 04 21



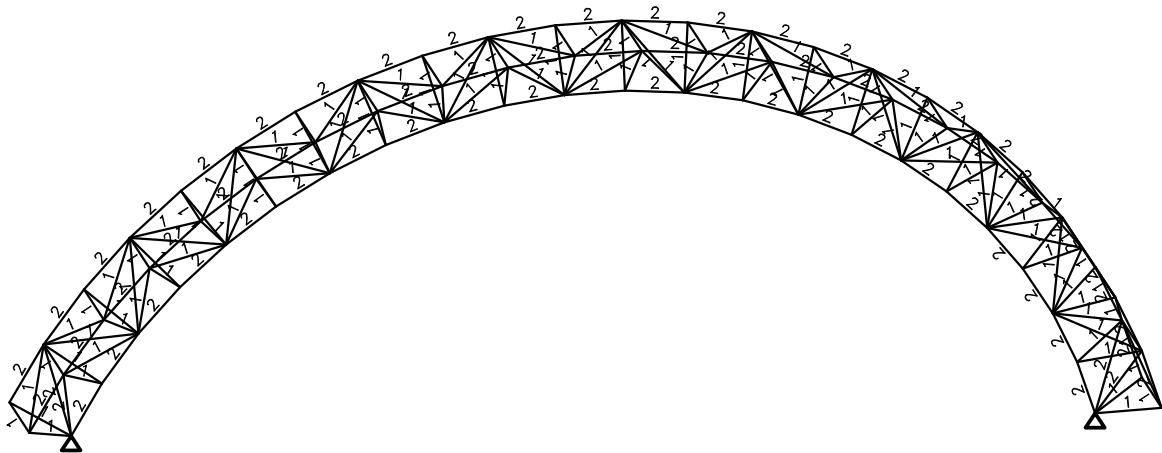
SCALE = 1:321

DATE:28/04/24

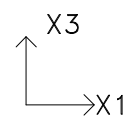




SCALE = 1:312

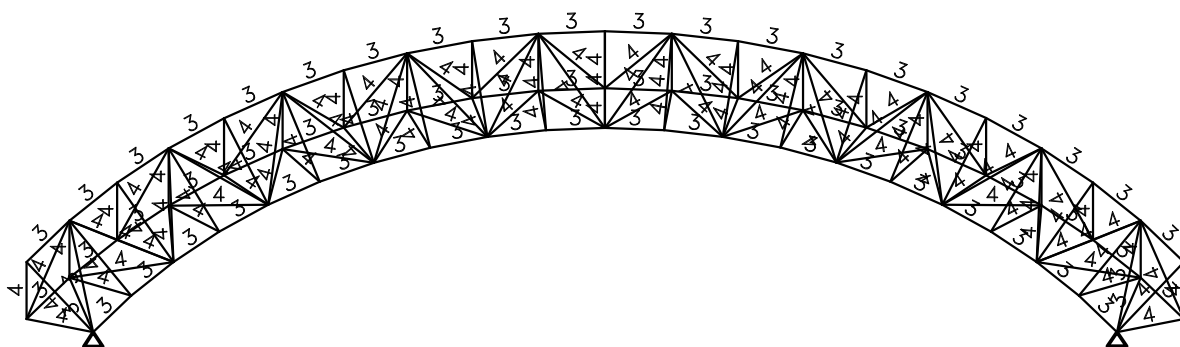


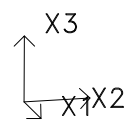
kupol V1 2024 04 21



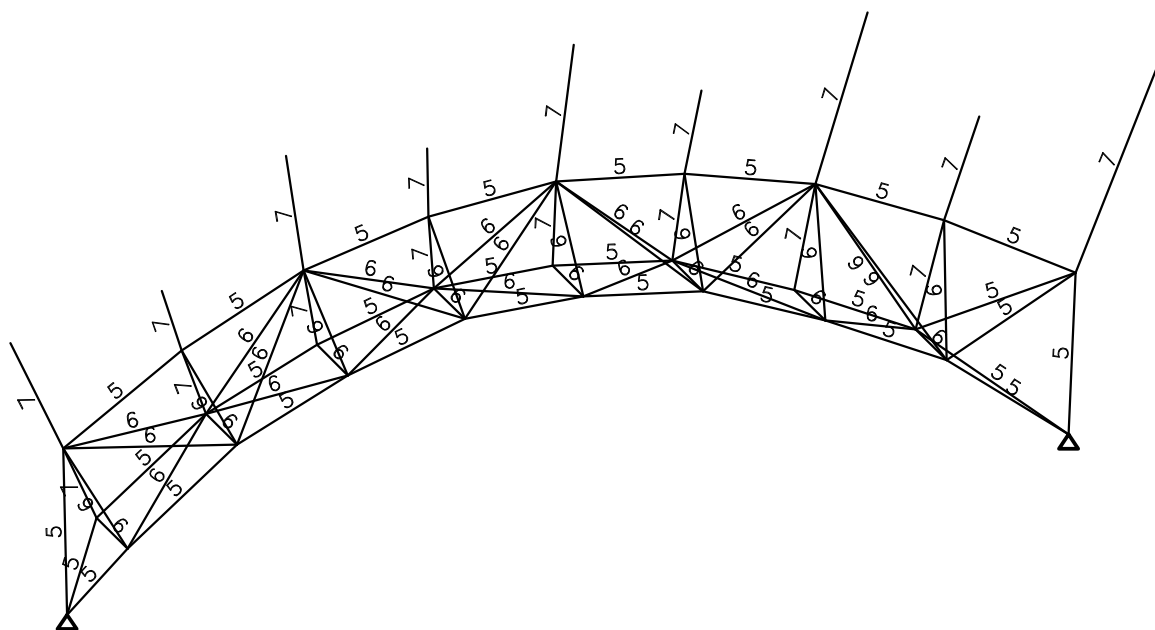
SCALE = 1:233

DATE:28/04/24





SCALE = 1:132



kupol V1 2024 04 21

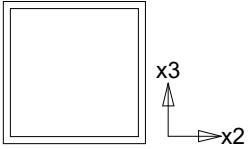
Prepared by:

Page: 1
 Date: 28/04/24
 10:39

SECTION PROPERTY TABLE (units - cm.)

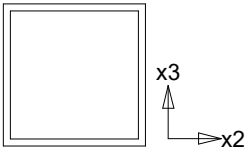
PROPERTY NO. 1 - RHS100x100x5.0

A=0.1890E+02 I2=0.2830E+03 I3=0.2830E+03 J=0.4390E+03 SF2=0.453
 Material = 1 - STEE Perimeter=40.000 SF3=0.453
 h2=10.000 h3=10.000 e2=5.000 e3=5.000
 Hot rolled RHS100x100x5.0
 h =100.0mm t =5.0mm
 b =100.0mm



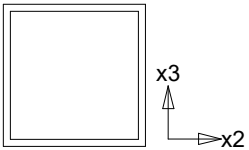
PROPERTY NO. 2 - RHS180x180x8.0

A=0.5470E+02 I2=0.2691E+04 I3=0.2691E+04 J=0.4160E+04 SF2=0.449
 Material = 1 - STEE Perimeter=72.000 SF3=0.449
 h2=18.000 h3=18.000 e2=9.000 e3=9.000
 Hot rolled RHS180x180x8.0
 h =180.0mm t =8.0mm
 b =180.0mm



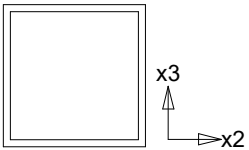
PROPERTY NO. 3 - RHS180x180x8.0

A=0.5470E+02 I2=0.2691E+04 I3=0.2691E+04 J=0.4160E+04 SF2=0.449
 Material = 1 - STEE Perimeter=72.000 SF3=0.449
 h2=18.000 h3=18.000 e2=9.000 e3=9.000
 Hot rolled RHS180x180x8.0
 h =180.0mm t =8.0mm
 b =180.0mm



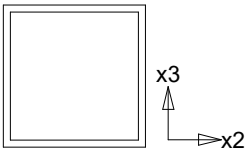
PROPERTY NO. 4 - RHS90x90x3.6

A=0.1240E+02 I2=0.1534E+03 I3=0.1534E+03 J=0.2370E+03 SF2=0.444
 Material = 1 - STEE Perimeter=36.000 SF3=0.444
 h2=9.000 h3=9.000 e2=4.500 e3=4.500
 Hot rolled RHS90x90x3.6
 h =90.0mm t =3.6mm
 b =90.0mm



PROPERTY NO. 5 - RHS120x120x5.0

A=0.2290E+02 I2=0.5028E+03 I3=0.5028E+03 J=0.7750E+03 SF2=0.446
 Material = 1 - STEE Perimeter=48.000 SF3=0.446
 h2=12.000 h3=12.000 e2=6.000 e3=6.000
 Hot rolled RHS120x120x5.0
 h =120.0mm t =5.0mm
 b =120.0mm



kupol V1 2024 04 21

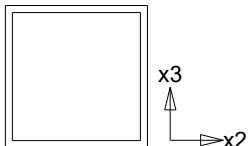
Prepared by:

Page: 2
Date: 28/04/24
 10:39

SECTION PROPERTY TABLE (units - cm.)

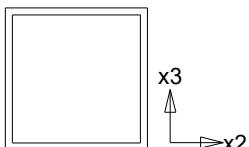
PROPERTY NO. 6 - RHS90x90x3.6

A=0.1240E+02 I2=0.1534E+03 I3=0.1534E+03 J=0.2370E+03 SF2=0.444
 Material = 1 - STEE Perimeter=36.000 SF3=0.444
 h2=9.000 h3=9.000 e2=4.500 e3=4.500
 Hot rolled RHS90x90x3.6
 h =90.0mm t =3.6mm
 b =90.0mm



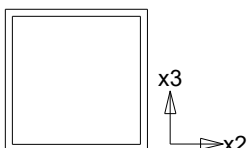
PROPERTY NO. 7 - RHS180x180x8.0

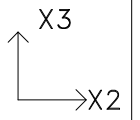
A=0.5470E+02 I2=0.2691E+04 I3=0.2691E+04 J=0.4160E+04 SF2=0.449
 Material = 1 - STEE Perimeter=72.000 SF3=0.449
 h2=18.000 h3=18.000 e2=9.000 e3=9.000
 Hot rolled RHS180x180x8.0
 h =180.0mm t =8.0mm
 b =180.0mm



PROPERTY NO. 8 - RHS100x100x5.0

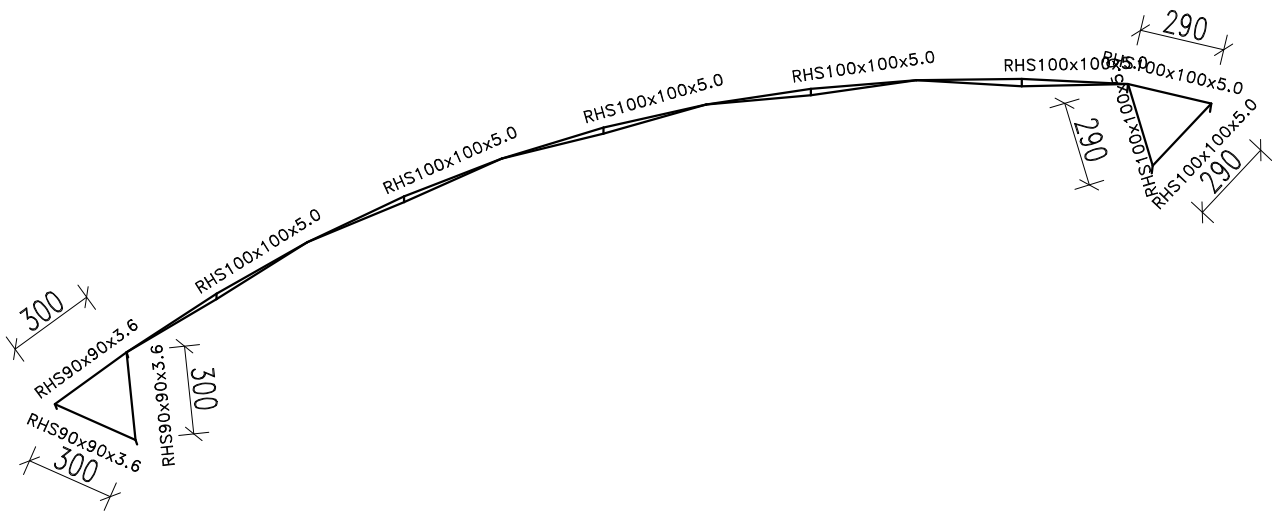
A=0.1890E+02 I2=0.2830E+03 I3=0.2830E+03 J=0.4390E+03 SF2=0.453
 Material = 1 - STEE Perimeter=40.000 SF3=0.453
 h2=10.000 h3=10.000 e2=5.000 e3=5.000
 Hot rolled RHS100x100x5.0
 h =100.0mm t =5.0mm
 b =100.0mm

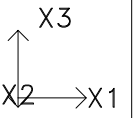




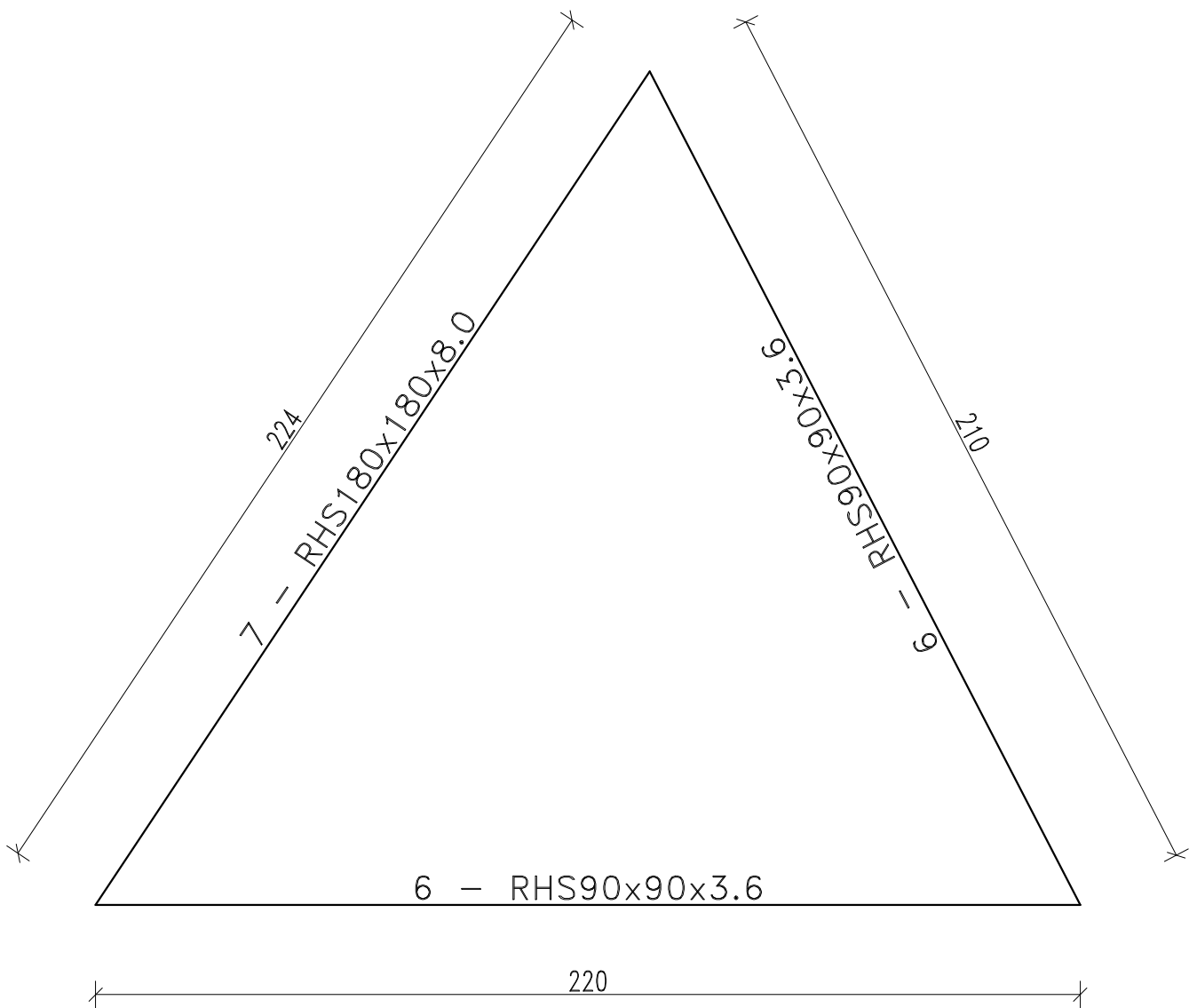
SCALE = 1:257

DATE:28/04/24





SCALE = 1:15



kupol V1 2024 04 21

Code: IS1225
Page: 3
Date: 28/04/24
10:56

Prepared by:

Sections Summary Table

<i>Section</i>	<i>Total length (meter)</i>	<i>Weight (ton)</i>	<i>Sub-total (ton)</i>
RHS 90x90x3.6	600.10	5.841	
RHS 100x100x5.0	1336.83	19.834	
RHS 120x120x5.0	158.51	2.849	
RHS 180x180x8.0	815.10	35.000	63.524
Total weight:		63.524	